



*Hawai'i
Pro-Am*

Pacific Northwest Section PGA

Hawai'i Pro-Am

January 14-21, 2016

Entry Fee: \$2,875 per person/double occupancy • Non-golfer: \$1,695



Mauna Lani Hotel



Inside Mauna Lani Hotel



Beachside Dining



Evening Entertainment



Mauna Lani

Golf...

... And so much more! Join us for a week of surf, sun and golf at the Mauna Lani Resort on the Big Island. You'll play three rounds of golf and have plenty of time to explore the resort and surrounding island, including beautiful beaches, shopping and fishing.

Greens fees and a shared golf cart for three rounds of golf are included.

We use a fun tournament format, with daily prizes (net and gross) for amateurs, professionals and teams. Overall tournament winners are based on best 2 out of 3 rounds

Enjoy cocktails and dinner on Jan 14 and 20 as well as breakfast on Jan 15.

Hotel

Seven nights accommodations at Mauni Lani Resort in an ocean view room are included in the entry fee (including tax and portorage).

Travel

Airfare and ground transportation are not included in your entry fee. Arrivals and departures should be through Kona Airport. Trip extensions are possible through individual arrangements.



PGA

Pacific Northwest Section

State Farm™
Jim Ostrander Insurance

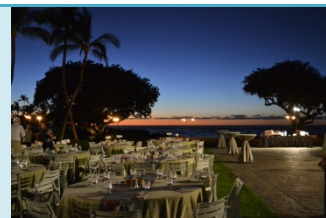
41ST HAWAII PRO-AM SCHEDULE

JANUARY 14-21, 2016

**Thursday,
January 14**

Arrive on the Big Island of Hawaii and the Mauna Lani Bay Hotel and Bungalows, our home for the week. Festivities start with a seaside Opening Reception at 6:30 PM.

Early arrivals are available; simply indicate on your formal entry form.



**Friday,
January 15**

A quick breakfast this morning to discuss the week's schedule and you are free the rest of the day to enjoy all the Big Island has to offer. Take a helicopter tour, visit the top of Mauna Kea, head out to deep sea fish or just hang on the beach. You can count on the sun to be shining!



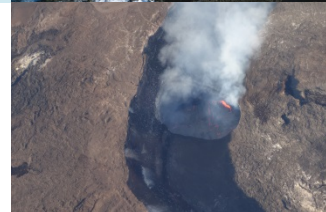
**Saturday,
January 16**

Round 1 of the pro-am on the very popular South Course. Tee times today start at 9:00 so we can take your team photos! The 7th and 15th are two spectacular par 3's right on the water.



**Sunday,
January 17**

Nothing scheduled. A day of leisure to embrace the pace of island life. Lie on the beach and enjoy a Mai Tai or plan a full day of activities. It's all about you today. Maybe dinner at the Canoe House, Tommy Bahama or Café Pesto.



**Monday,
January 18**

Round 2 of the pro-am on the challenging North Course. Today is an 8:00 Shotgun so you have the afternoon free.



**Tuesday,
January 19**

Final Round of the pro-am back on the South Course. Another 8:00 Shotgun. New for 2016, the Ladies Tournament will be played today in the same South Course shotgun— be sure to sign up!



**Wednesday,
January 20**

Our final full day in paradise. You are free today until our closing Farewell Cocktails and Awards Dinner tonight at 7:00 PM. Enjoy the day — just make it back by 7:00 and enjoy music from Joe Spencer and the band.



**Thursday,
January 21**

Our trip to the Mauna Lani comes to an end.

Extensions of your stay are available; simply indicate on your formal entry form.

